



POWER TRANSMISSION
FLUID POWER
Divisions



Solutions for the CONCRETE Industry

PMP[®]
INDUSTRIES

COMPLETE SOLUTIONS from a single supplier

DURABILITY, EFFICIENCY and SERVICEABILITY

Pmp Industries designs, develops and manufactures reliable solutions for the Concrete Industry sector. From the worldwide known PMB gearbox for Mixer Trucks to the travel drives for the Concrete Paving Machines, PMP provides a range of solutions tailored on the applications specific requirements and on the customers needs.

PMP Power Transmission and Fluid Power Divisions integrated themselves perfectly to provide the customer with complete solutions from both worlds.

PMB Inline gearboxes cover the widest range of applications on Mixer trucks and trailers: up to 18 cubic meters drum capacity.

PMB Reverso gearbox is a smart alternative to right angle drives. The Reverso gearboxes combine extremely compact dimensions, increased simplicity and efficiency, as these models are not adopting any bevel gear stage.

PMC track drives integrate PMP's long term experience in harsh environment applications with dedicated design solutions for each specific equipment. The Final result is increased durability even in the toughest conditions.

PMT swing drives are designed for the application on mobile and industrial machinery whenever the rotation of a structure or a device is requested. PMT swing drives feature compact dimensions, durability, simple mounting for a perfect match between pinion and ring gear.

PMH high pressure axial piston **pumps** and **motors** are specifically designed to be used on heavy duty machines for traction and auxiliary functions, providing efficiency and durability.

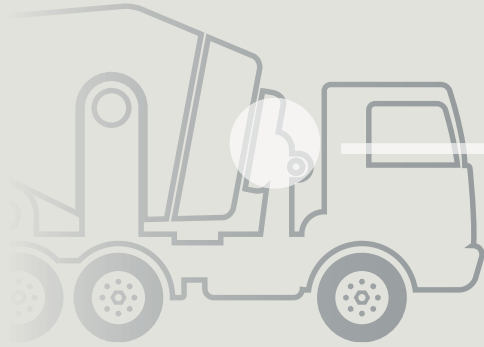


Solutions for
CONCRETE MIXER TRUCKS
and CONCRETE PUMPS





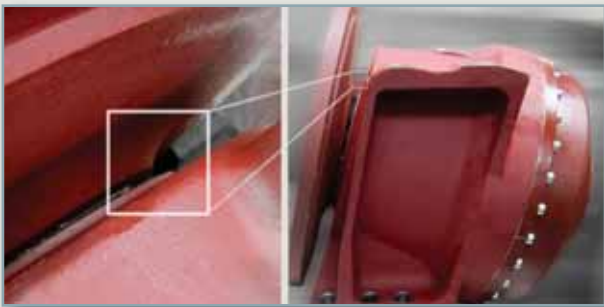
PMB, inline gearboxes



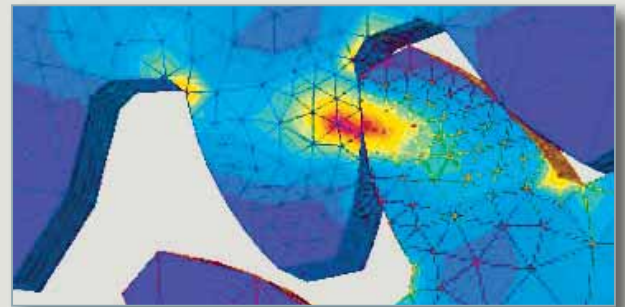
Specification

	PMB 6	PMB 6.5	PMB 7.1	PMB 7.8	PMB 8
Max output torque [Nm]	60.000	65.000	70.000	80.000	85.000
Max input speed [rpm]	2.500	2.500	2.500	2.500	2.500
Available ratios [I:]	100	120	120 or 130	130 or 140	140 or 150
Weight [kg]	250	290	305	345	367
Mixer truck drum capacity [m ³]	8	10	12	16	18

Features



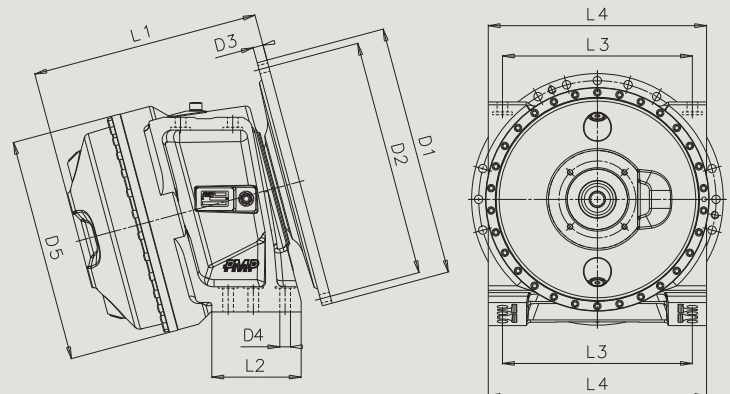
PMB gearboxes feature an **additional protection profile** on the output flange to reduce the risk of seal damage.



PMP Research & Development designed special gears profile for **outstanding noise performances**.

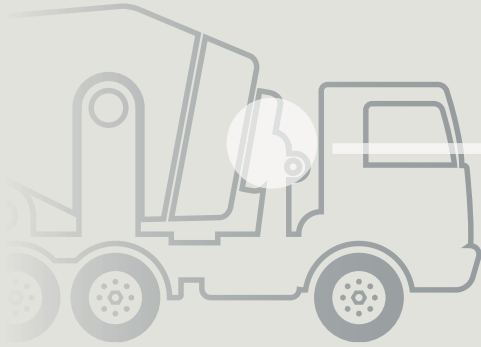
Dimensions

	PMB 6	PMB 6.5	PMB 7.1	PMB 7.8	PMB 8
L1	459,4	478,4	480	486	541,6
L2	187	188	188	188	188
L3	400	400	400	400	400
L4	460	460	460	460	460
D1	530	530	530	530	530
D2	500	500	500	500	500
D3	21,5	21,5	21,5	21,5	21,5
D4	22,5	22,5	22,5	22,5	22,5
D5	440,5	470	470	503	506





PMB, reverso gearboxes



Specification

	PMB 7.1R	PMB 7R	PMB 7.8R
Max output torque [Nm]	70.000	75.000	80.000
Max input speed [rpm]	2.500	2.500	2.500
Available ratios [1:]	140	140	140
Weight [kg]	330	350	375
Mixer truck drum capacity [m ³]	12	12	14

Features



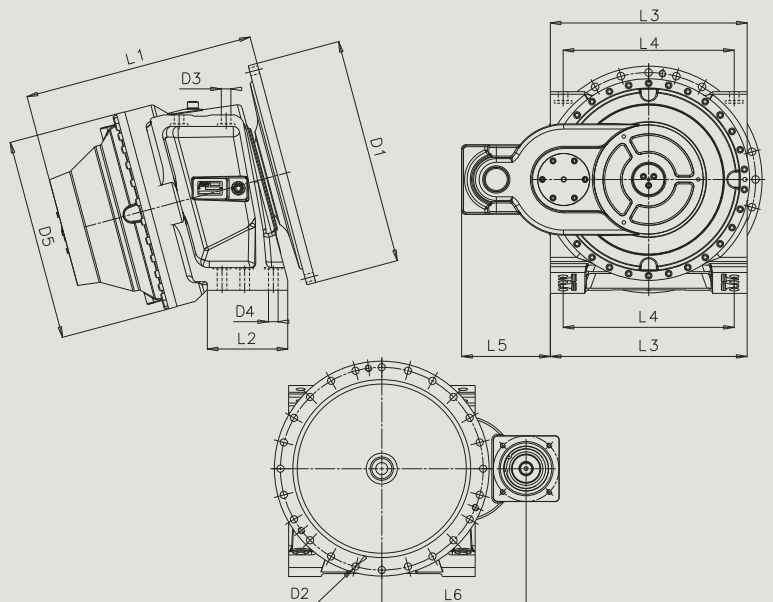
PMB has a reliable main bearing which feature a **total capacity up to 30% higher** than two ball bearing designs and features metal cage for **high resistance in harsh conditions**.



Reverso model allows the positioning of the hydraulic motor on the side of the gearbox, thus **reducing total length**.

Dimensions

	PMB 7R	PMB 7.1R	PMB 7.8R
L1	537,1	541	541,7
L2	188	188	188
L3	460	460	460
L4	400	400	400
L5	201	207	225
L6	350	355,7	373,8
D1	530	530	530
D2	18	18	18
D3	22,5	22,5	22,5
D4	22,5	22,5	22,5
D5	446	470	506





PMH P, hydraulic pumps



Specification

	PMH P 72	PMH P 90	PMH P 110
Displacement [cc/rev]	72	90	110
Max shaft speed [rpm]	4.000	4.000	3.800
Max pressure [bar]	450	450	450
Input torque @ 250 bar [Nm]	308	385	460
Weight [kg]	55	66	66
Mixer truck drum capacity [m ³]	7-8	9-12	13-18

Features



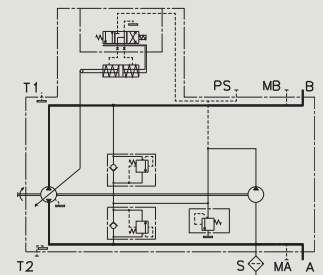
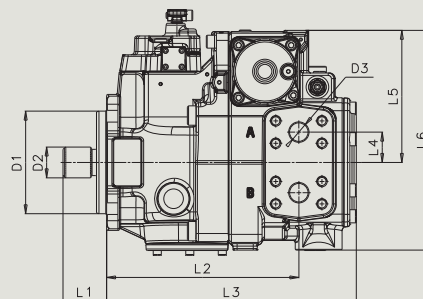
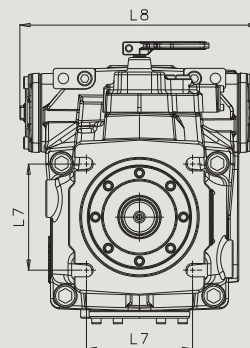
Rotating blocks are made in **special steel** and use **full bronze cylinder sleeves**.



The cylinder block is manufactured by using **premium materials** and adopting an **innovative preload system** which increases motor life.

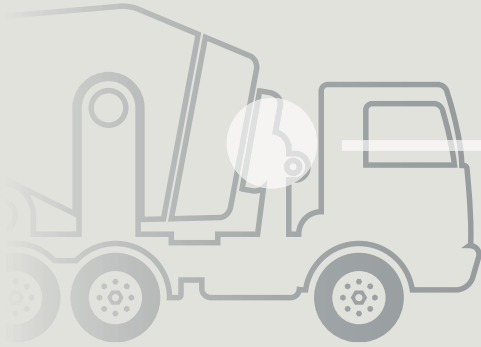
Dimensions

	PMH P 72	PMH P 90	PMH P 110
L1	53,9	53,9	53,9
L2	238	238	238
L3	309	309	309
L4	37,5	37,5	37,5
L5	163	163	161,8
L6	271,5	271,5	270,3
L7	114,4	114,4	114,4
L8	258	258	276
D1	127	127	127
D2	ANSI B.92.1		
D3	25,4	25,4	25,4





PMH M, hydraulic motors



Specification

	PMH M 55	PMH M 72	PMH M 90	PMH M 110
Displacement [cc/rev]	55	72	90	110
Max output speed [rpm]	4.300	4.100	4.000	3.800
Max pressure [bar]	450	450	450	450
Max output torque [Nm]	350	480	550	650
Weight [kg]	24	28	34	34
Mixer truck drum capacity [m ³]	4-6	7-8	9-12	13-18

Features



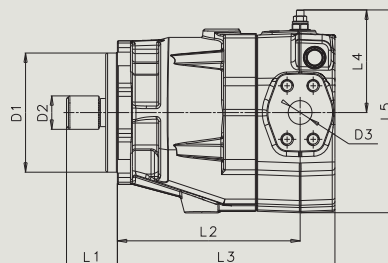
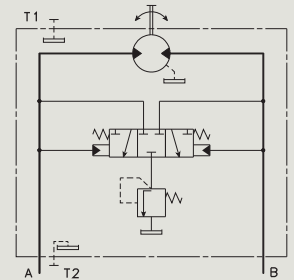
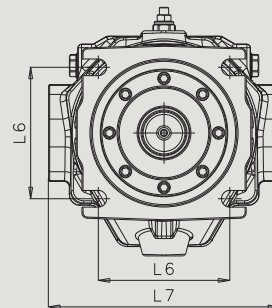
Valve plates use **extremely hard materials** and their **geometry is optimized** for durability and efficiency.



PMH M motors feature **integrated flushing valve** for closed loop applications.

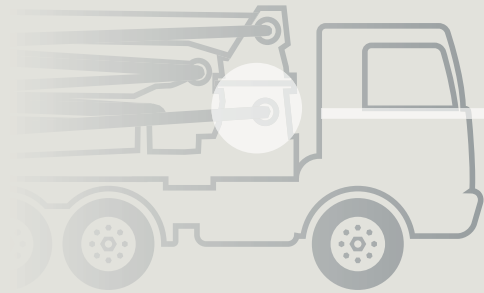
Dimensions

	PMH M 55	PMH M 72	PMH M 90	PMH M 110
L1	54,1	54,1	54,1	54,1
L2	174	188	194,8	194,8
L3	210	230	232	232
L4	102,4	105,3	109	109
L5	192,2	206,6	216	216
L6	114,4	114,4	114,4	114,4
L7	170	183	201	201
D1	127	127	127	127
D2	ANSI B.92.1			
D3	19	25,4	25,4	25,4





PMT, swing drives



Specification

	PMT 650	PMT 1000
Max output torque [Nm]	6.500	10.000
Max input speed [rpm]	3.500	3.500
Available ratios [1:]	12-40	12-120
Weight [kg]	85	130
Concrete pump size [m ³]	24-30	30-36

Features



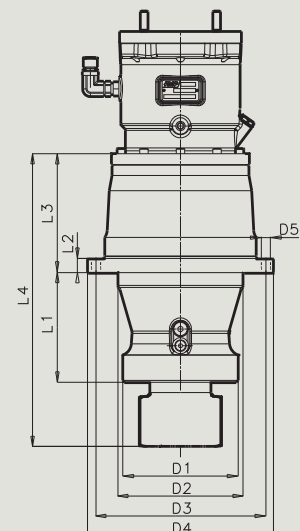
Wet disk brake features a patented system which allows **immediate disk separation when the brake is released**, thus minimizing heat generation.



PMT drives feature **outstanding radial load capacity** on the output pinion, which can be integrated or removable with splined connection.

Dimensions

	PMT 650	PMT 1000
L1	171	220
L2	22	25
L3	376	387
L4	647	707
D1	180	200
D2	195	250
D3	265	325
D4	290	360
D5	13	17



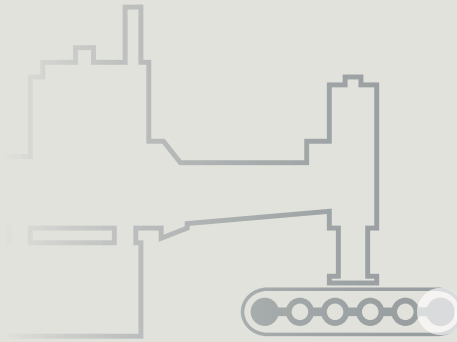


Solutions for
CONCRETE PAVING EQUIPMENT





PMC, track drives



Specification

	PMR 680	PMC 1100	PMC 2000	PMC 3000	PMC 4000	PMC 4500
Max output torque [Nm]	7.000	11.000	20.000	30.000	40.000	45.000
Max input speed [rpm]	3.500	3.500	3.500	3.500	3.500	3.500
Available ratios [1:]	18-55	15-55	19-168	60-151	76-146	55-135
Weight [kg]	50	85	100	165	180	190

Features



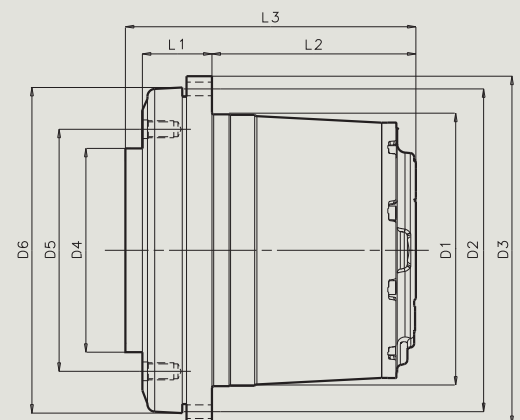
PMC gearboxes feature **special gear profiles** in order to optimize gear contact in a wide range of loading conditions.



PMC drives features the famous standard **PMP brake solution**.

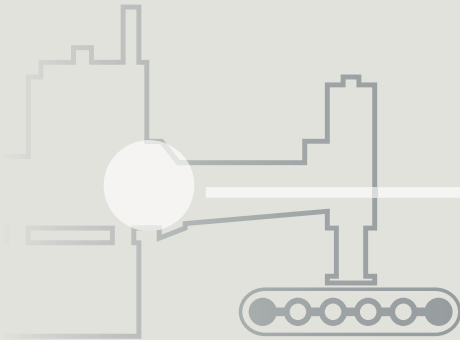
Dimensions

	PMR 680	PMR 1100	PMC 2000	PMC 3000	PMC 4000	PMC 4500
L1	107	110	115	82	91	90
L2	112	138,8	201	240	240	256
L3	267,4	272,8	331	342	366	396
D1	200	240	280	320	350	350
D2	241	282,6	330	380	400	400
D3	278	320,8	370	410	435	435
D4	177,8	240	235	240	240	330
D5	209	275	300	285	285	370
D6	242	300	330	383,4	383,4	410





PMH P, hydraulic pumps



Specification

	PMH P 72	PMH P 90	PMH P 110
Displacement [cc/rev]	72	90	110
Max shaft speed [rpm]	4.000	4.000	3.800
Max pressure [bar]	450	450	450
Input torque @ 250 bar [Nm]	308	385	460
Weight [kg]	55	66	66

Features



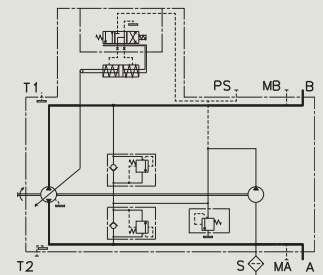
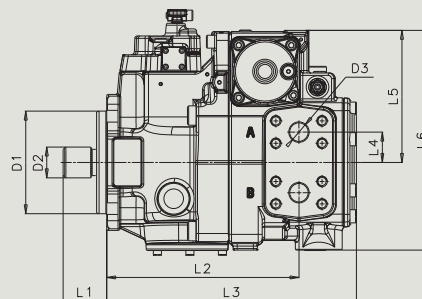
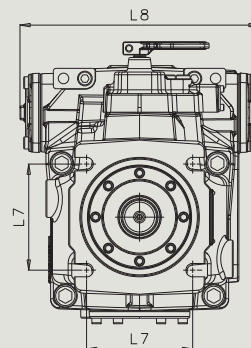
Rotating blocks are made in **special steel** and use **full bronze cylinder sleeves**.



The cylinder block is manufactured by PMP using **premium materials** and adopting an **innovative preload system** which increases motor life.

Dimensions

	PMH P 72	PMH P 90	PMH P 110
L1	53,9	53,9	53,9
L2	238	238	238
L3	309	309	309
L4	37,5	37,5	37,5
L5	163	163	161,8
L6	271,5	271,5	270,3
L7	114,4	114,4	114,4
L8	258	258	276
D1	127	127	127
D2	ANSI B.92.1		
D3	25,4	25,4	25,4





Everywhere in the world
transmitting our
winning philosophy

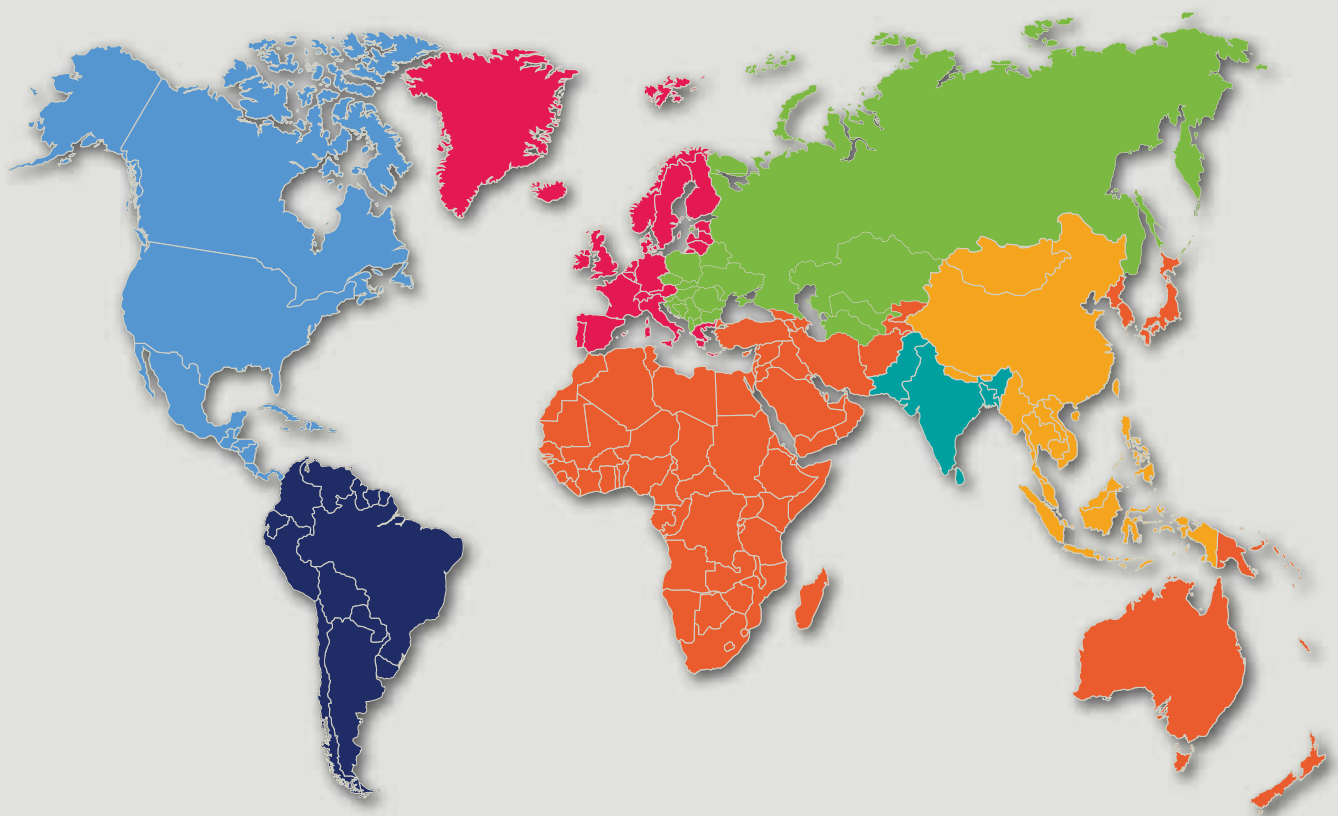
PMP, THE APPLICATION SPECIALIST








Global Presence, worldwide growth

PMP Power Transmission and Fluid Power Divisions are part of PMP Industries Spa, the holding company of an international group including 5 entities, 4 business divisions and 1000 employees worldwide.

Through its four divisions, **PMP Industries is capable of serving a wide range of businesses globally**: from the Construction Equipment to the Steel industry, from AG & Forestry to Mining equipment manufacturers, from the Wind to the Marine industry.

PMP Industries HQ are located in Italy where the company was first established in 1991. Today PMP's four manufacturing locations supply mechanical transmissions, hydraulic transmissions, heavy metal fabrications and dedusting systems worldwide.



	WESTERN EUROPE	e-mail: sales.eu@pmp-industries.com T. +39 0432 863 611
	NORTH and CENTRAL AMERICA	e-mail: sales.usa@pmp-industries.com T. +1 513 563 3008
	SOUTH AMERICA	e-mail: sales.sa@pmp-industries.com T. +39 0432 863 622
	CHINA and SOUTH EAST ASIA	e-mail: sales.cn@pmp-industries.com T. +86 512 827 066 88
	INDIAN SUBCONTINENT	e-mail: sales.ind@pmp-industries.com T. +91 2135 252511
	RUSSIA and EASTERN EUROPE	e-mail: sales.ru@pmp-industries.com T. +39 0432 863 670
	REST OF THE WORLD	e-mail: sales@pmp-industries.com T. +39 0432 863 611

ITALY

BOSNIA-HERZEGOVINA

USA

CHINA

INDIA

BRAZIL



**POWER
TRANSMISSION**
Division



**FLUID
POWER**
Division



**STEEL
WORKS**
Division



**ENVIRONMENTAL
DEDUSTING**
Division



www.pmp-industries.com